

YOSHI



Every moment has its color

C A T A L O G



Every moment has its color

YOSHI

GEL POLISHES	4 - 5
BUILDER GELS	6 - 19
BASES	20 - 25
TOPS	26 - 31
DECORATIONS	32 - 33
LIQUIDS & PREP	34 - 37
BRUSHES	38 - 41
TOOLS & ACCESSORIES	42 - 43

GEL POLISHES

The significance of colors in our daily lives is invaluable. They influence our mood, create atmosphere, and stimulate emotions. The world of colors is a constantly vibrating energy that surrounds us from every side. That is why at YOSHI, we have taken care to make each color unique. We have created a rich color palette that includes both pastel colors, charming with their delicacy and subtlety, and deep, saturated shades that tempt with their intensity. If you want to stand out, our glitter polishes will definitely draw your attention, and if you are enchanted by the delicate play of light on your nails, our metallic shades will be perfect for you. Our color range is so extensive that it encompasses a color for literally every occasion! YOSHI polishes offer a unique combination of durability and perfectly pigmented colors. Our polishes do not contain harmful substances, and when combined with YOSHI bases, they create a perfect product that meets the expectations of even the most demanding customers.



GEL POLISHES
UV LED
6 ml

Check the complete palette of colors on www.yoshi.com.pl



YOSHI
UV HYBRID
NAVAGIO

BUILDER GELS

Jelly PRO

A building gel based on a modern formula. Ideal as a structure gel or for complete extension and nail building, hard and durable. It is perfect for nail reconstruction, filling in defects. It is a gel that is suitable for pinching, creates a beautiful tunnel, and does not expand. The unique consistency - initially looks like jelly, but when gently stirred it changes consistency and sets beautifully under the brush. With calm work, it is possible to achieve a perfect surface. It cannot be compared to other gels on the market. One of a kind. It does not flow, does not flood the cuticles, and is convenient for application and filing. It works brilliantly for long nails, extreme shapes, and avant-garde styles. You can also build nails without doing the framework separately. It has a reduced polymerization temperature, so it does not cause a burning sensation in the lamp! It is too hard for curing the natural plate. It is recommended to use the Ultra Bond 007 base coat underneath it.



Jelly PRO
15ml | 50ml

Available colors:



Milky Pink



Cover Biscuit



Cover Powder Pink



Cover Light Beige



Cover Ivory



Cover Peach



Shiny Tape



Pink Gloss



Flamingo



Fuzzy



Velvet Nude

Clear PRO

Transparent builder gel, self-leveling, quite hard. It does not cloud or yellow during polymerization, so it works great in structural french or other structural decorations such as nailboutin, stone imitations, etc. It self-levels, creating an even layer. It can be used as a structure gel, for extension, or nail building. The reduced polymerization temperature means it does not cause a burning sensation in the lamp. Easy to apply and work with.



Clear PRO UV LED
15ml | 50ml

YOSHI
GEL UV/LED
Jelly[®]
pro
Cover Pink



Easy PRO

A thin, self-leveling, flexible gel ideal for quick refills and hardening the natural nail plate. It works great on natural nails that are already too long for a hybrid base. It can be used on any type of nail plate. It greatly speeds up salon work during fills. Suitable for the gel technique without filing. It levels, creating a perfect line of light. Due to its high elasticity, we do not recommend it for extensions. It has a reduced polymerization temperature, so it does not cause a burning sensation in the lamp. It is recommended to use the Ultra Bond 007 base coat underneath it.



Easy PRO
15ml | 50ml

Available colors:



Pink Blink



Fresh Pink



Cover Dark



Cover Light



Milky White



Cover Nude



Cover Natural

French Line

Medium-density, self-leveling and hard gel for durability and resistance to external factors. Safe for those with sensitive skin (HEMA FREE and TPO FREE). Ideal for French manicure styling. Perfect for nail construction, extensions and touch-ups, does not flood cuticles and does not burn under the lamp. Recommended for beginners, easy to unfold, allows you to build a perfect surface. For long nails, we recommend Jelly Pro gel skeleton to maintain a beautiful tunnel. Ideal for salon shapes and lengths and non-sawing technique. It is recommended to use Ultra Bond 007 base coat underneath and finish the styling with DIAMOND TOP or French Top series.



French Line
15ml | 50ml

Available colors:



No 1



No 2



No 3



No 4



No 5



YOSHI

easy
PRO

COVER NATURAL

50 ML UV / LED SELF-LEVELING GEL

Thixo PRO

Medium-thick, self-leveling, pearl builder gel. Suitable for building, extending, and filling nails. Ideal for salon lengths. For long nails, we recommend using Jelly Pro gel as a structure to maintain a beautiful tunnel. It has high surface tension and liquid memory, so it works slowly, does not flood the cuticles, and does not flood sidewalls. It adheres strongly to the brush and responds brush pull. You can create a perfect line of light with it and work with „no filing“ technique. It has a reduced polymerization temperature, so it does not cause a burning sensation in the lamp. Ideal for ladies who love sparkle. Just finish it off with a top coat and an elegant manicure is ready. It may be too hard for curing delicate natural plates. To cure natural plate, we recommend Easy Pro. It is recommended to use the Ultra Bond 007 base coat underneath it.



Thixo PRO
15 ml | 50 ml

Available colors:



Bling



Champagne Pink



Champagne Nude



Milky Pinky



Ivory



Powder Pink



Biscuit

Fiber PRO

A new generation advanced builder gel that meets the needs of both novice stylists and experienced professionals. Thanks to its innovative microfibre formula, Fiberglass combines reinforcement, unparalleled durability and flexibility to become an indispensable tool in any styling routine. It provides excellent adhesion to the natural nail plate, minimises the risk of separation from the nail and effectively prevents breakage.



Fiber PRO
15ml | 50ml

Available colors:



No 1



No 2



No 3



No 4



No 5



YOSHI

FIBER
PRO

30 ML GEL UV/LED

1

SELF - LEVELING

YOSHI 1 FIBER
PRO

SELF LEVELING BUILDER GEL

Master PRO

These are medium density, hard builder gels with a self-levelling formula. Easy to apply and extremely versatile, they are perfect for building salon lengths. They are also a great choice for beginner stylists to create the perfect nail surface.



Master PRO
15ml | 50ml

Available colors:



Beige



Biscuit



Ivory



Cover Peach



Milky



Powder Pink

Go Shape

GO SHAPE is a hard building gel with a medium-thick consistency, designed for complete control over shape and stable, predictable performance. It self-levels in a calm, controlled manner, allowing you to build the perfect structure without rushing and without the risk of flooding the cuticles. The gel formula is resistant to external factors, does not trap air and does not chip, ensuring that the styling remains durable and aesthetic throughout the entire wear period. GO SHAPE allows for precise modelling, clamps well and allows you to build an even, smooth surface already at the application stage..



GO SHAPE UV LED
50ml

Available colors:



No 1



No 2



No 3



No 4



No 5



YOSHI
MASTER
PRO

COVER
POWDER PINK

LEVELING GEL

SeaStory

Thick, slightly self-levelling builder gel with large, multicolored particles. Ideal for building, extending and filling nails. SEA STORY gels create an amazing iridescent effect, adding a unique shine to the styling. Does not flood the cuticles, does not burn in the lamp. Perfect for construction french technique and fantasy french styling. For long nails, we recommend Jelly Pro gel skeleton to maintain a beautiful tunnel. To harden the natural plate, we recommend Easy Pro. It is recommended to use Ultra Bond 007 base coat under it.



Seastory
15ml

Available colors:



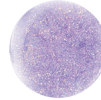
Coral Coast



Ocean Odyssey



Pearl Reef



Seabreeze



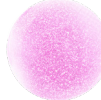
Seashell Pink



Seaside



Moon Bay



Taffy Tide

Twilight Flash

Thick, self-levelling builder gel with multicolor glitter. Ideal for building, extending and filling nails. Perfect for creating expressive styles with flash effect - intense, short-lasting flashes. Does not flood cuticles or burn in the lamp. Each color contains multicolored, shimmering glitter particles. Ideal for glitter fans, great for fantasy french techniques and princess nails. Finish with a top coat to enjoy an elegant and long-lasting effect. For long nails, we recommend Jelly Pro gel skeleton to maintain a beautiful tunnel. To harden the natural plate, we recommend Easy Pro. It is recommended to use Ultra Bond 007 base coat under it.

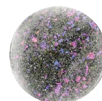


Twilight Flash
15 ml

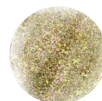
Available colors:



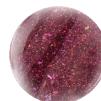
Dreamscape



Duskfall



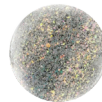
Firefly



Stargazer



Moonrise



Nightglow



YOSHI
GEL UV/LED

DREAMSCAPE
TWILIGHT

Alaska

Glitter PRO

Medium-thick, self-leveling builder gel with fine particles. Suitable for building, extending, and filling. It can be used to create a perfect line of light, and to work with „no filing“ technique. It does not flood the cuticles, does not cause a burning sensation in the lamp, and each color contains shimmering silver particles. Ideal for ladies who love a sparkle. Just finish it off with a top coat, and an elegant manicure is ready. Ideal for salon lengths. For long nails, we recommend using Jelly Pro gel as a structure to maintain a beautiful tunnel. For hardening the natural plate, we recommend Easy Pro. It is recommended to use the Ultra Bond 007 base coat underneath.



Glitter PRO
15ml | 50ml

Available colors:



No 1



No 2



No 3



No 4



No 5

PoliGel

These are building gels with a very thick, non-dripping consistency and exceptional hardness. They are ideal for nail extensions, reconstruction and strengthening the natural nail plate. Their versatility makes them perfect for french manicures. PoliGel can be used with Yoshi forms or dual forms, as well as for creating beautiful styles such as French manicures or baby boomer manicures.



PoliGel
30ml

Available colors:



No 1 Clear



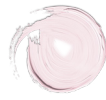
No 2



No 3



No 4



No 5



YOSHI

POLI
GEL



GEL UV / LED

HEMA
& PO
FREE

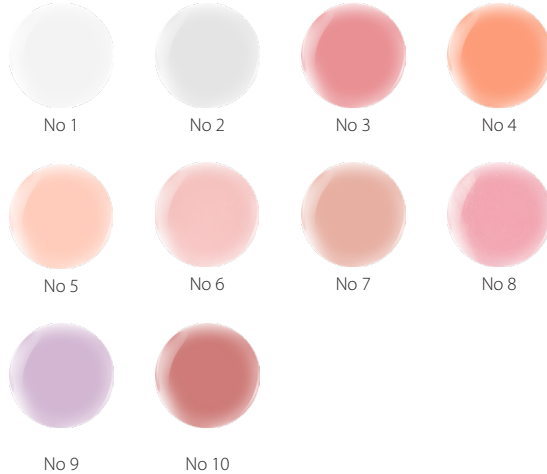
Gel In Bottle

A builder gel created for fast salon work, both for fills and hardening the plate. It works perfectly in the „gel without filing“ technique. It is as easy to work with as a hybrid base, achieving gel hardness. It is characterized by a fairly high hardness, so it will be perfect for fills. When hardening the natural plate, care should be taken not to apply it to very soft, delicate nails, as it may be too hard. It is recommended to use a base coat under it, we recommend Ultra Bond 007.



Gel in Bottle
10 ml

Available colors:



Acryl In Bottle

Acryl In Bottle is a modern acrylic gel in an innovative liquid formula, enclosed in a bottle with a precision brush, which combines the strength of acrylic with the comfort of gel. Thanks to the combination of the best properties – the durability of acrylic and the ease of application of gel – it becomes a universal construction material. The product has a medium-thick, self-levelling consistency that is stable enough to maintain the desired shape, yet formable enough to spread and level easily without streaks.



Acryl In Bottle
10ml

Available colors:





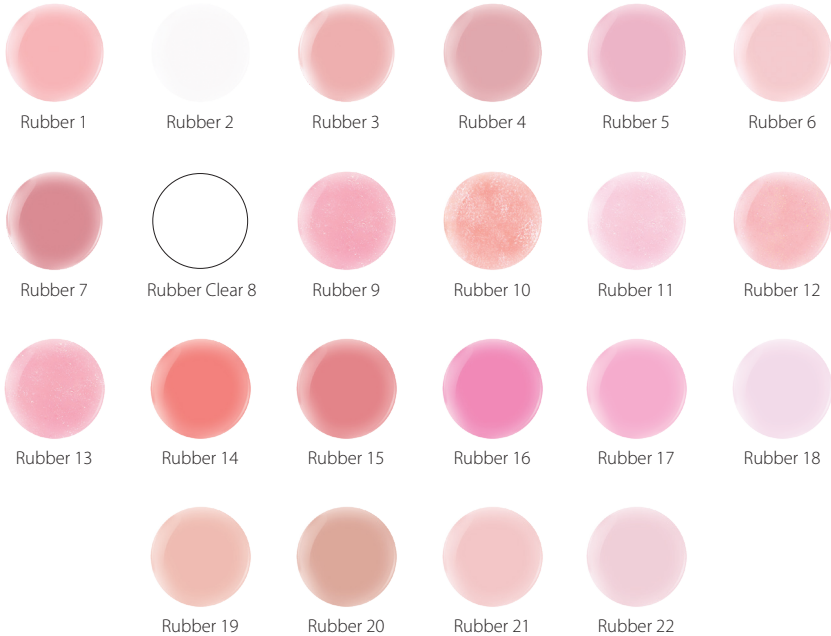
YOSHI
GEL IN
BOTTLE

BASES

Rubber Base

Rubber Base is a base coat, designed especially for flexible, thin, and problematic nails, where hard products fail and detach from the plate. Thanks to its elasticity, it works together with the natural plate. Its medium-thick, slightly dragging texture prevents the base from flowing onto the cuticles while setting on its own on the nail, creating a perfect light line. Application is easy and pleasant. One can use it as a standard base coat under gel polish. It can also be used to gently even out the surface and color of the natural nail. It perfectly strengthens the flexible nail plate. Thanks to rubber bonds, it stiffens the nail while remaining very flexible. It eliminates discoloration, evens out the color, and smooths out minor unevenness of the plate. It enhances the adhesion of gel polish. Rubber Base Clear - also perfect for attaching zircons.

Available colors:



Rubber Base
10ml



YOSHI

Rubber
Base

Professional

No.
2

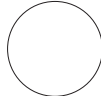
Hard Base

A hybrid base intended for gel manicure. Hard Base has increased surface tension, so it „stays in place“ during work, giving more time during styling. It does not flood the cuticles, does not flow, and almost creates a perfect surface on its own. It can harden the nail plate or be used for gentle leveling. Application is easy and pleasant.



Hard Base
10 ml

Available colors:



Hard Clear 1



Hard 2



Hard 3



Hard 4



Hard 5



Hard 6



Hard 7

Fiber Base

A base for nails with a fiberglass content is an innovative product that is gaining popularity in the nail styling industry. It is an excellent choice for people who struggle with brittle and weak nails. Due to the fiberglass content, nails become more resistant to damage. The fiberglass layer creates an additional shield on the nail surface, protecting it from mechanical damage and breakage. It can be used to correct minor imperfections of the nail plate, gently leveling the surface. It levels perfectly, leaving no visible fibers on the surface, resulting in a beautiful light line. The consistency facilitates work and can shorten styling time. The base works great with all types of plates - both thin and flexible, as well as harder ones.

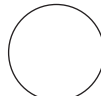


Fiber Base
10 ml

Available colors:



Fiber 1



Fiber 2 Clear



Fiber 3



Fiber 4



Fiber 5



Fiber 6



Fiber 7



YOSHI

Fiber Base

6

Ultimate Base

This base coat was created for the most difficult conditions – it is resistant to stress, durable, and at the same time works perfectly with the nail, so it does not crack or chip. It perfectly strengthens the natural nail plate. It perfectly strengthens the natural nail plate and fill in defects.



Ultimate Base
10ml

Ultra BOND 007

A classic hybrid base for gel manicures. Transparent, flowing, with a very thin consistency. This is a base coat dedicated for different applications. Perfect for gel manicure, hardening the natural nail plate and extensions. It works great as a base for pedicures because it does not overly stiffen the nail plate, and it is not excessively compressed in shoes. This helps to prevent mechanical damage to the nails. It greatly increases adhesion, protects the plate from irritating substances, and extends the durability of the manicure.



Ultrabond Base
10ml

Special Base

A base designed for gel manicures. The base is used to harden the nail plate. It can also be used for leveling or gentle enhancement of the nail plate. It significantly increases adhesion. The ideal consistency prevents the base from flowing onto the cuticles while beautifully laying on the nail, creating a perfect line of light. This makes application easy and pleasant.



Special Base
10ml



YOSHI
ULTIMATE
BASE
UV HYBRID

TOPS

TOP TEMPERED: **BESTSELLER!**

Top Tempered an exceptional top coat that combines stunning shine with the strength of tempered glass. With it, your manicures will look freshly done straight from the salon, maintaining a flawless appearance for up to 4 weeks. Say goodbye to scratches and dullness, this is the top coat that keeps your nails impeccable.

Designed for professionals and nail lovers alike:

Top Tempered was created with precision, keeping both professional stylists and all lovers of beautiful, durable nails in mind. Its unique fan-shaped brush makes application incredibly pleasant, allowing the product to spread evenly, self-level, and create a perfect light-reflecting line.

No-wipe convenience:

Top Tempered is a no-wipe top coat, so there's no need to remove the dispersion layer after curing, saving time and making your manicure routine even easier.

Perfect consistency:

The refined formula prevents flowing onto cuticles or thickening over time. You can rely on consistent performance from the first to the last use, ensuring effortless and precise application every time.

Durable as tempered glass:

It forms a hard, protective layer that is highly resistant to scratches and daily wear. Enjoy long-lasting, pristine manicures regardless of the type of styling gel polish, gel, or acrylic.

Unique brush:

Applying Tempered Top is a pure pleasure. The specially designed brush ensures smooth, even coverage, allowing the product to self-level and eliminating the need for corrections, delivering a flawless result every time

Dazzling shine:

Gives nails an intense, mirror-like gloss that enhances every color and adds elegance to your design. Top Tempered ensures your manicure always looks freshly done, with professional-quality shine that lasts.



Top Tempered
10ml



YOSHI
TOP TEMPERED

TOP TEMPERED DIAMOND

Top Tempered Diamond gloss top coat that stands out for its exceptional durability and dazzling shine. As strong as tempered glass, this top coat delivers flawless longevity and brilliance for up to 4 weeks, no matter the type of manicure.

Maximum durability:

Top Tempered Diamond forms a hard, scratch-resistant layer that protects your nails from daily wear. Your designs stay perfect for weeks, without any signs of damage.

Diamond-like shine:

Provides an intense, mirror-like gloss that enhances every color and adds elegance to your manicure. Perfect for all nail types from gel polish to gel and acrylic.

UV protection:

Equipped with UV filters, Top Diamond shields your manicure from the sun's rays, preventing fading and maintaining shine – perfect for sunny days or vacations.

Unique brush for easy application:

The specially designed brush ensures smooth, even coverage. The top coat self-levels, creating a perfect light reflection line, making application effortless and enjoyable.

Perfect consistency:

Forget about thickening or quality loss. The precisely formulated Top Tempered Diamond maintains its properties from first to last use, guaranteeing reliability and comfort during application.



Top Tempered
Diamond
10ml

Based on the Top Tempered formula, we have created a wide range of other tops that also offer a durable and beautiful effect.



YOSHI
TOP
TEMPERED
DIAMOND
HEMA FR



TOP Milky 10 ml



TOP Perfect Matte 10 ml



TOP Party Top 10 ml



TOP Dots 10 ml



Top UV Protect 10 ml



TOP Star Dust 10 ml



TOP French 10 ml



TOP Pure Love 10 ml



TOP Comet Crush 10 ml



TOP Gold Dream 10 ml



TOP Sparkle Rose 10 ml



TOP Star Light 10 ml



TOPFETTI 10 ml



YOSHI

Top
French

5

DECORATIONS

PaintGel

Paint Gel Yoshi is a real revolution in nail styling – created for professionals who do not compromise and expect maximum precision, intense pigmentation and unmatched durability. Thanks to its ultra-pigmented formula, Paint Gel Yoshi provides perfect coverage with just one stroke of the brush. Its creamy, thick consistency gives you full control over the product, allowing you to create extremely precise designs. It has no inhibition layer, which means it does not require cleaning – you can immediately secure the decoration with a top coat and enjoy a long-lasting effect.



Paint GEL
5ml

Mirror Effect

Discover the mesmerizing mirror-like shine with Mirror Effect UV LED powders by Yoshi. These ultra-fine metallic pigments transform any manicure into a sophisticated, reflective surface that beautifully catches and plays with light. Depending on the base color, they reveal a variety of finishes from soft pearly reflections to an intense chrome-like glow. The powders are easy to apply and perfectly compatible with gel polish, gel and acrylic systems, allowing endless possibilities for creative expression. Whether used for subtle, elegant looks or striking, high-shine designs, Mirror Effect powders bring a refined brilliance to every style and occasion.

Holo Flakes UV LED

These metallic, thin flakes stand out with their delicate holographic reflections in shades of pink, gold and blue. Their irregular shapes perfectly match any style, creating subtle and elegant decorations that are perfect for both everyday use and special occasions.

Check the complete palette of colors on www.yoshi.com.pl



YOSHI
Paint Gel
Black

LIQUIDS & PREPARATIONS

Luxury Cleaner

100% isopropyl alcohol. Used to cleanse the dispersion layer from applied products or to cleanse dirt from the nail plate before nail styling. For degreasing and correct nail plate preparation, we recommend using Nail Prep (dehydrator).



Luxury Cleaner
500 ml

Perfect Cleaner

Isopropyl alcohol + water. Used to cleanse the inhibitory/dispersion layer, it is not recommended to clean the nail plate before styling due to the water content.



Perfect Cleaner
500 ml/1000 ml

Perfect Aceton

Cosmetic acetone intended for removing gel polish. Also used in acrylic and gel techniques. Recommended for professional use in beauty salons.



Perfect Aceton
500 ml/1000 ml

Acid Primer

A preparation based on methacrylic acid, creating strong chemical bonds in acrylic technology, to which it is dedicated. It will also work for problematic nail plates. The product should be applied only to the natural nail, to the natural nail, before applying any products, then wait until the preparation evaporates completely. Primer does not leave a sticky layer.



Acid Primer
10 ml

Non Acid Primer

This is a preparation used to increase the adhesion of products to the natural nail plate. It is much gentler than Acid Primer. The main ingredient is Octyl Ethyl Ester. It is used for gel stylizations. Avoid contact with the skin. The primer leaves a sticky layer, onto which we directly apply hybrid or gel base.



Acid - free Primer
10 ml

Nail Prep Dehydrator

Dehydrator with a strong formula that has perfect properties for proper nail plate preparation before styling, removes the hydro-lipid layer from the plate, removes cosmetic and atmospheric impurities. Dries and cleanses the plate. Increases the adhesion of subsequently used products without changing the pH.



Dehydrator
10 ml

Cuticle Oil

It softens even the most stubborn cuticles, making them supple and healthy-looking. Thanks to its large capacity, this product will last a long time – both in everyday care and in professional nail salons. A luxurious formula based on natural oils – the base is nourishing sunflower oil, enriched with vitamin E, which intensively regenerates, moisturises and protects cuticles and nails. Maximum nourishment and strengthening. The unique combination of oils deeply moisturises, supports regeneration and prevents cuticles from drying out. Additionally, it strengthens the nail plate, reducing its brittleness and tendency to split.



No 1
15 ml



No 2
15 ml



No 3
15 ml



No 4
15 ml



No 5
15 ml



No 6
15 ml



BRUSHES

YOSHI brushes are made of high-quality bristles with a well-refined shape. They are perfect for applying gel, leveling light lines, thin lines, ornaments, one stroke or zhostovo floral embellishments, realism, micropainting. Perfectly balanced for improved work comfort. Pink brush handles made of metal. They have a removable cap that protects against damage, against damage and splitting.

Gel brush #4

Brush with long synthetic bristles for spreading gel or coat in from the base. Ideal for spreading material precisely. The thin bristles allow for neat application near the cuticles without flooding them.

NYLON synthetic bristles.
Width: 4 mm.



Gel brush #6

Brush with long synthetic bristles for spreading gel or coat in from the base. Ideal for spreading material precisely. The thin bristles allow for neat application near the cuticles without flooding them.

NYLON synthetic bristles.
Width: 6 mm.



Liner brush #7

Brush with natural Kolinsky bristle, 7 mm long. The thin brush is perfect for thin lines, painting ornaments, all kinds of details, and painting near the cuticles.

Natural KOLINSKY hair.
Length: 7 mm.



Liner brush #9

Brush with natural bristle, 9 mm long. The thin brush is perfect for thin lines, painting ornaments, and long, straight lines.

Natural KOLINSKY bristle.
Length: 9 mm.





Liner brush #12

Brush with natural Kolinsky bristle, 12 mm long. The thin brush is ideal for thin lines, painting ornaments, and long, straight lines. Perfect for leveling light lines. Very soft, does not spring back, follows the hand, greatly facilitates salon work when leveling the surface of the base, topcoat, or in gel technique without filing.

Natural KOLINSKY bristle.
Length: 12 mm.



One Stroke brush #2

Brush for painting decorations using the „one stroke“ technique. The small size of the brush allows for precise painting of decorations, even on small nails. The brush has natural bristles, making painting with it much more enjoyable and easier than with a synthetic hairbrush. The brush is very soft and does not create streaks or smudges when painting.

Natural KOLINSKY hair.



Zhostovo brush #2

Brush with natural bristle, designed for the zhostovo technique, micropainting, and all kinds of shading and blending of paint gels. Due to its small size, the brush facilitates work on small surfaces during decoration.

Natural KOLINSKY bristle.



Polygel brush #6

Ideal brush for working with acrylic gel. On one side, it has bristles for smoothing the product, and on the other, a spatula for scooping acrylic gel from the container, which makes working with this product quicker and easier.

Synthetic NYLON bristle.





YOSHI

GEL BRUSH #6

TOOLS & ACCESSORIES

CUTICLE NIPPERS

Cuticle nippers are made of surgical-grade stainless steel. As the steel is nickel-free, they do not cause an allergic reaction. Sharpened using laser technology, ensuring precise blade finishing. The exceptional sharpness of the nippers and the very thin blade allow for full precision of movement. They do not blunt or rust. Suitable for sterilization in an autoclave. Blade length: 3.5 mm.



FORMS

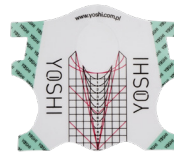
A product created for professionals. The forms are made of stiffened paper. They have a very strong glue which allows us to press the form and build nails without pushing. The work is also guided by auxiliary lines which have been applied to ensure quick and pleasant work, and aesthetic effect. The forms have cutting lines relative to the free edge of the natural nail, in width and depth, so that the arc of the template matches the shape of the natural nail. They also have side cut lines and auxiliary lines for creating salon shapes.



FORMS
100 PCS/400 PSC

TRANSPARENT FORMS

The YOSHI transparent forms are a professional product designed for maximum precision and comfort during nail extension. Made from innovative, transparent PVC foil, they ensure perfect fit, exceptional stability, and full control throughout the application process. Their crystal-clear structure allows light to penetrate the form, enabling simultaneous curing from both the top and bottom, which shortens styling time and improves durability. The strong and reliable adhesive keeps the form securely in place during the entire modeling process, preventing shifting or peeling. A precisely designed grid of auxiliary lines ensures symmetrical extensions and accurate shaping for almond, square, or stiletto nails.



FORMS
100 PCS/400 PSC

FILES

The YOSHI LUX 100/180 and 180/240 boat-shaped file is the answer to every professional's needs. Designed for the highest quality work in the salon, it guarantees excellent results and maximum comfort – both for the stylist. The ergonomic dimensions of the LUX file make it extremely comfortable and precise to work with, even during long styling sessions. The delicate yet effective gradation makes the file perfect for natural nails as well as gel and hybrid styles. Ideal for every stage of work.



FILES
100/180





YOSHI

- 📍 50-559 Wrocław
ul. Świeradowska 77
- ☎ +48 666 708 758
- ✉ contact@yoshi.com.pl
- 📱 @yoshiprofessional
- 🌐 yoshi.com.pl